

QM250



Think Smartly

Population & Sample

أ/ محمد الشيخ
33901325





► The manager of a book store surveys people who buy mystery novels to see if the store should expand its hour, what is the population?


A) people who visit the book store

B) people who buy mystery novels

C) people who like to read

D) residents of the town





► Student surveys Economic teachers to get their opinion on teaching. What is the sample

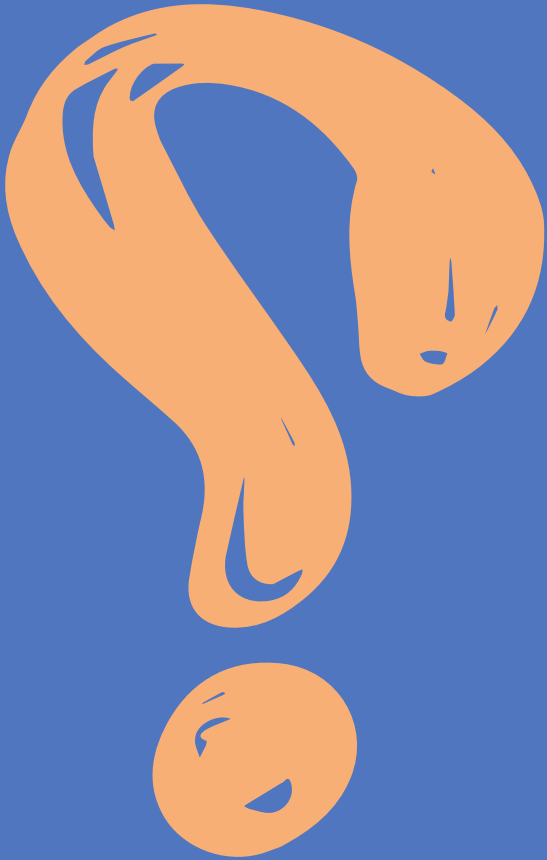
A) all teachers within school

B) all teachers in the world

C) all economic teachers in the school

D) all Economic teachers in the world





► A computer manufacturer surveys it's computers who purchased laptop computers to ask what software the company should include with its computer.
identify the population.


A) customers who purchased laptop computers

B) customers who are interested in software

C) customers of the store

D) computer manufacturers





► A music store gives comment cards to all members of its jazz club to find out about satisfaction with the clubs feature, identify the sample

A) people who play instruments

B) all music store customers

C) all music store customers except jazz club members

D) jazz club members





► A scientist studies a herd of mule deer to learn about their dietary habits, identify the population

A) all Animals

B) Deer

C) mule deer

D) Mules



لمنيزه من الاسئله
لطفًا انضم لقناتنا عبر
التيلجرام و الانستقرام

Academiya.com 

اطلب قناة المادة من فريقنا في سمارت سنتر



33901325



Smart_.center

